



2019 WIDECAST Annual General Meeting
Paramaribo, Suriname, 19-21 March 2019

Protected species under the SPAW protocol in the Wider Caribbean Region

A stylized illustration of a sea turtle swimming underwater. The turtle is light blue with dark spots on its shell and is surrounded by several smaller fish. The background is a gradient of blue, with white wavy lines representing the surface of the water.

Sandrine Pivard, Director,
Regional Activity Center for the SPAW Protocol (SPAW-RAC)



Cartagena Convention

Only Legally Binding, Regional Agreement for the Protection and Development of the Marine Environment of the Wider Caribbean Region

The Caribbean Environment Programme (CEP) was formally established by the Governments of the Wider Caribbean Region in 1981 and is now one of the oldest and most successful of the UNEP administered Regional Seas Programmes.



The Contracting Parties shall take all appropriate measures to prevent, reduce and control:



Article 10

Specially protected areas and wildlife



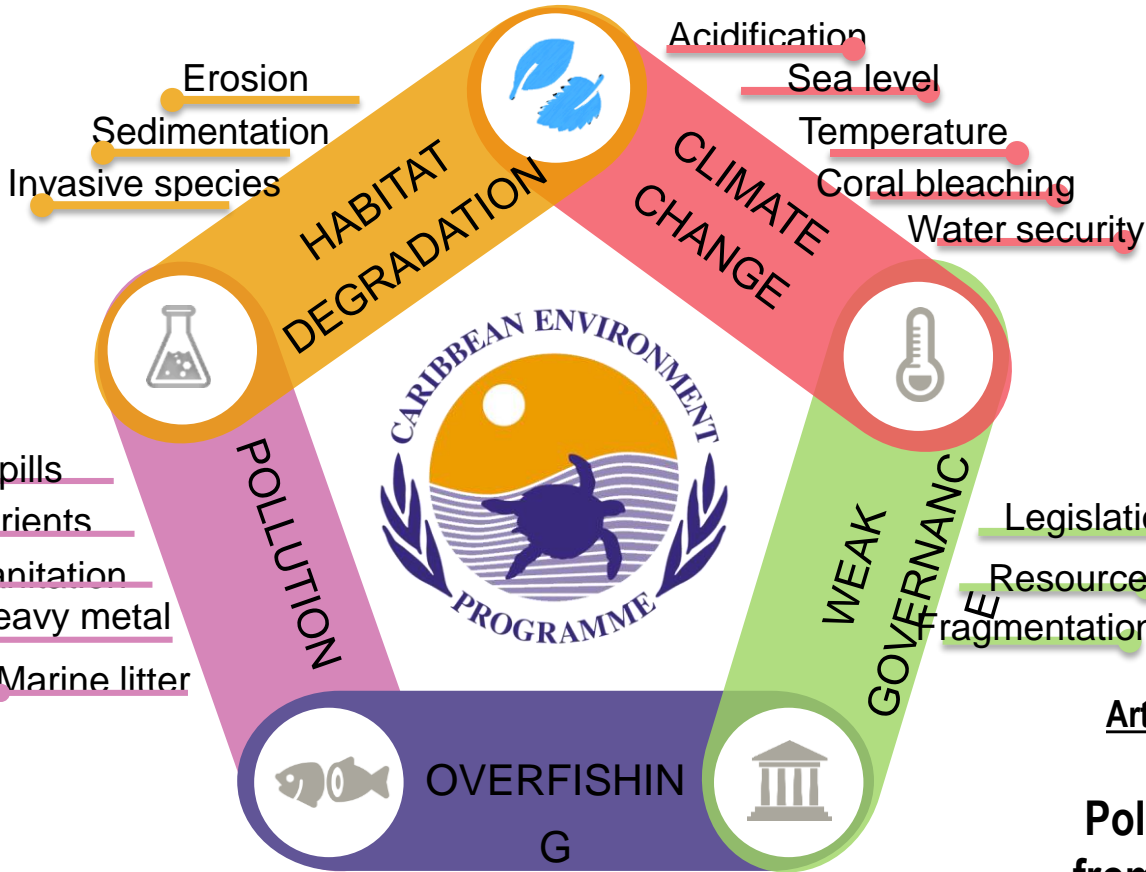
Article 9

Air pollution



Article 8

Pollution from sea bed activities



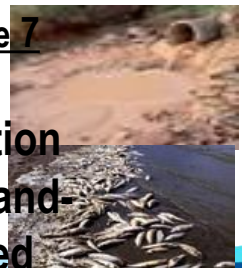
Article 5

Pollutions from ship



Article 6

Pollution from dumping



Article 7

Pollution from land-based sources





The Cartagena Convention as a regional agreement addresses several different coastal & marine environmental threats affecting the countries of the Wider Caribbean Region. *Adopted in 1983, Entered into force 1986*

28 Parties

Pollution from Oil Spills



Adopted in 1983
Entered into force in 1986
25 Parties



Specially Protected Areas & Wildlife (SPAW)



Adopted in 1990
Entered into force in 2000
17 Parties



Land Based Sources and Activities of Marine Pollution (LBS)



Adopted in 1999
Entered into force in 2010
13 Parties

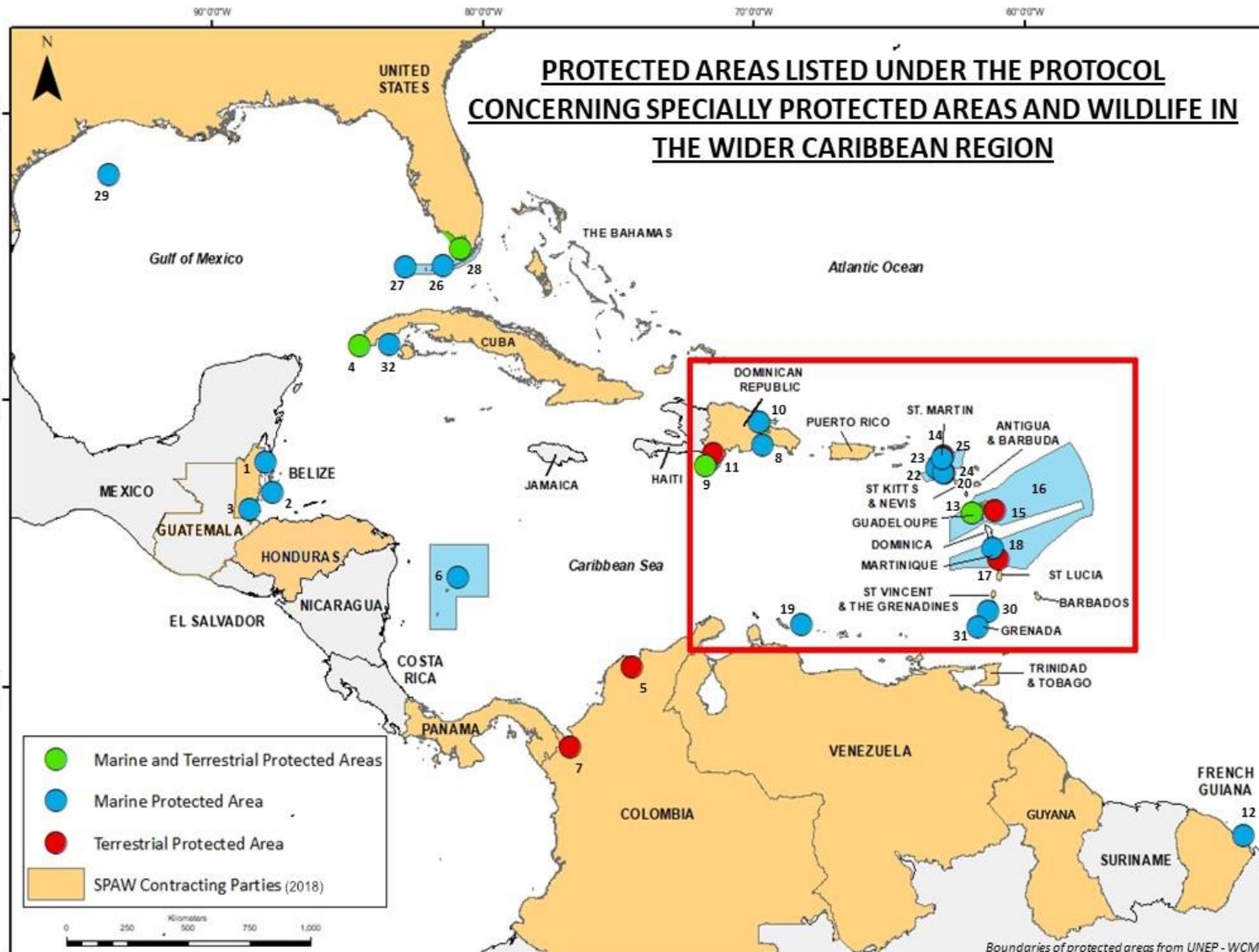


The three Protocols to the Convention identify additional obligations for the protection and development of the Caribbean Sea and are supported by REGIONAL ACTIVITY CENTRES (RAC)



SPAW parties and sites





- 1 Hol Chan Marine Reserve
- 2 Glover's Reef Marine Reserve
- 3 Port Honduras Marine Reserve
- 4 Guanahacabibes National Park
- 5 Cienaga Grande de Santa Marta Sanctuary
- 6 Regional Seaflower Marine Protected Area
- 7 Regional Natural Park of Wetlands between the rivers León and Suriquí
- 8 La Caleta Submarine Park
- 9 Jaragua National Park
- 10 Los Haitises National Park
- 11 Sierra de Bahoruco National Park
- 12 Grande Connétable Island Natural Reserve
- 13 Guadeloupe National Park
- 14 St Martin Lagoon Ponds National Park
- 15 Petite-Terre National Reserve
- 16 Agoa Sanctuary
- 17 The Saline Pond Reserve
- 18 Reserve du Versant Nord-Ouest de la Montagne Pelée
- 19 Bonaire National Marine Park
- 20 St Eustatius National Park
- 21 The Quill/Boven National Park
- 22 Saba Bank National Marine Park
- 23 Saba National Marine Park
- 24 St Eustatius National Marine Park
- 25 Man O War Shoal Marine Park
- 26 Florida Keys National Marine Sanctuary
- 27 Dry Tortugas National Park
- 28 Everglades National Park
- 29 Flower Garden Banks National Marine Sanctuary
- 30 Tobago Cays Marine Park
- 31 Molière-Beauséjour Reserve
- 32 Cayos de San Felipe National Park



Establishment and strengthening of MPAs

Ecosystem based management, spatial marine planning



Development of guidelines for the management of MPAS and species

Assessment and completion of the **existing listings**, develop cooperation between SPAW sites



REGIONAL COOPERATION

Preservation of threatened and endangered species



Mainly marine mammals,
Turtles (WIDECAST), sharks, birds

Preservation and sustainable use of coastal and marine ecosystems



Coral reefs (GCRMN, ICRI), mangroves, seagrass, invasive species control, sargassum, sustainable development,

BEST (EU) projects

Species protected under the SPAW protocol



✓ Annexes of the SPAW Protocol:

Annex I



Flora species

(Marine, coastal or terrestrial)

→ Exploitation is forbidden

Annex II



Fauna species

(Marine, coastal or terrestrial)

→ Exploitation is forbidden

Annex III



Flora & Fauna species

(Marine, coastal or terrestrial)

→ Populations must be maintained at a sustainable level

✓ Current numbers of species listed :

53

plant species

116

species

3

gr. of species

43

plant species

42

animal species

5

gr. of species



Species protected under the SPAW protocol



Listed at COP9 (2017)

✓ Added to Annex II :

Painted bunting (*Passerina ciris*)

Smalltooth sawfish (*Pristis pectinata*)

✓ Added to Annex III:

Florida treesnail (*Liguus fasciatus*)

Great Manta ray (*Manta birostris*)

Reef Manta ray (*Manta alfredi*)

Manta sp. cf. birostris

Scalloped Hammerhead shark (*Sphyrna lewini*)

Great Hammerhead shark (*Sphyrna mokarran*)

Smooth Hammerhead shark (*Sphyrna zygaena*)

Oceanic whitetip shark (*Carcharinus longimanus*)

Whale shark (*Rhincodon typus*)

Nassau grouper (*Epinephelus striatus*)

Recommended by the STAC8 at COP10 (2019?)

✓ Added to Annex II :

Large-tooth sawfish (*Pristis pristis*)

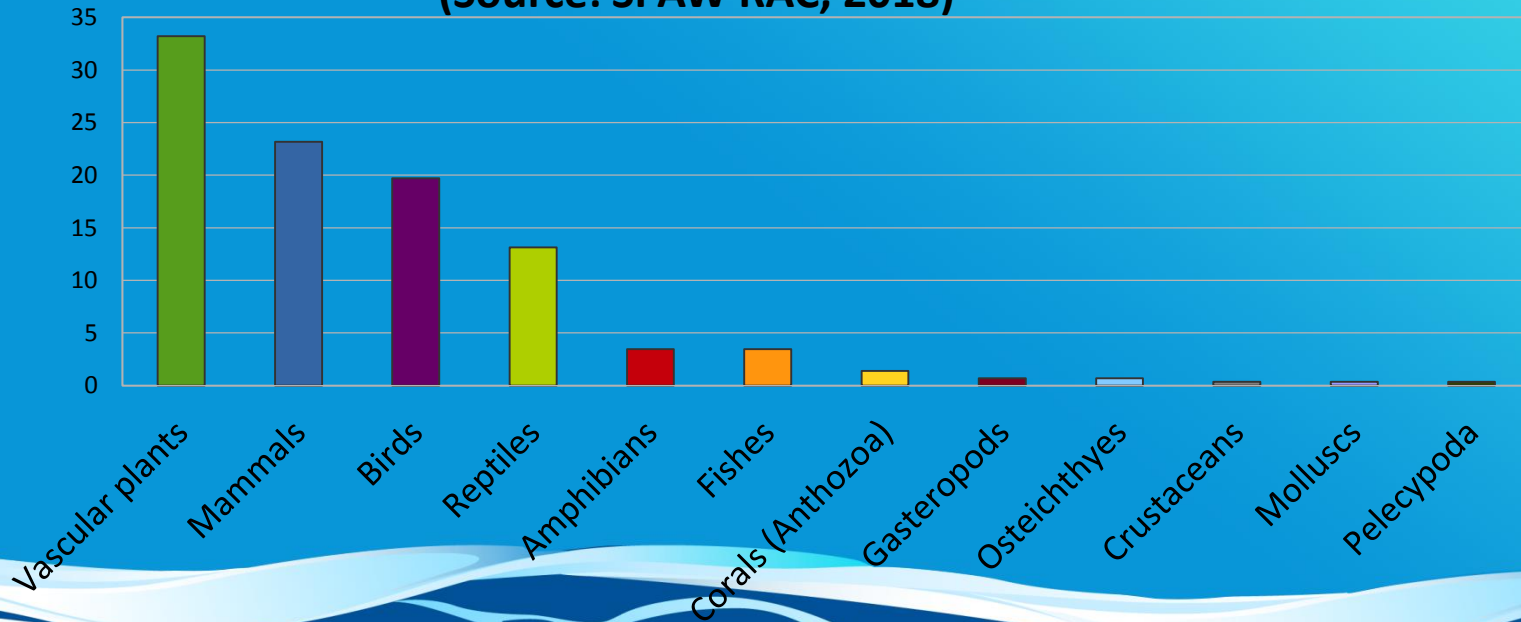
✓ Added to Annex III:

Silky shark (*Carcharinus falciformis*)



Class of species listed under the SPAW Protocol

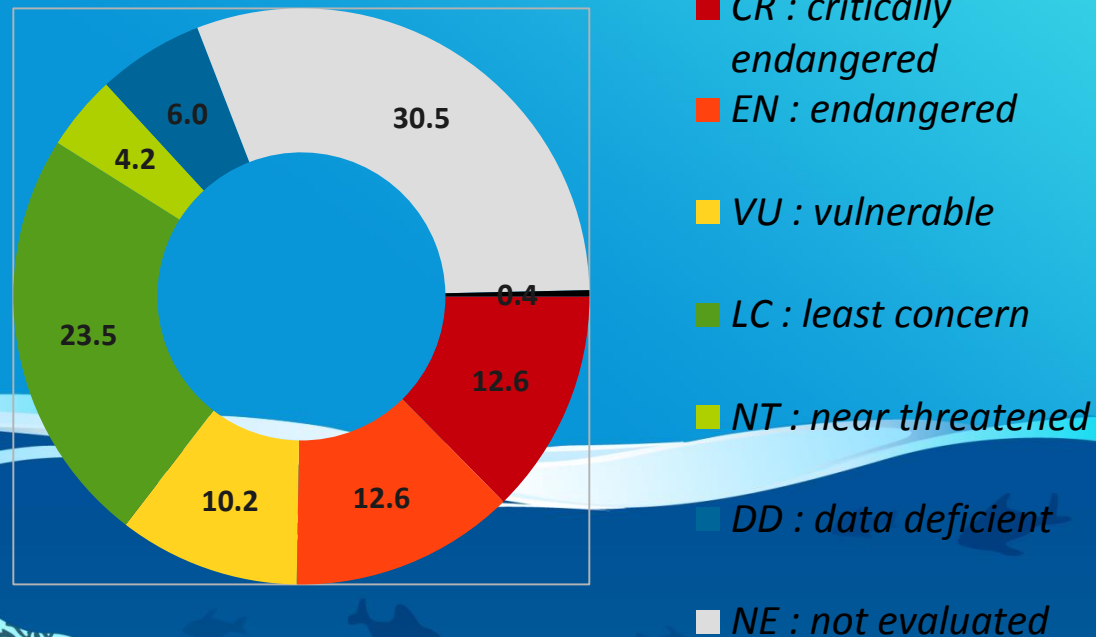
Percentage of species listed under the SPAW Protocol by their class
(Source: SPAW RAC, 2018)



Status of species listed under the SPAW Protocol

- 140 species listed under SPAW are also inscribed in CMS, CITES and EU wildlife trade regulation.
- 25 species in the Annexes of CMS (Bonn Convention)
- 85 species in the Appendices of CITES (Washington Convention)
- 37 in the EU wildlife trade regulation

Distribution in percentage of species listed under the SPAW Protocol by their UICN conservation status (Source: SPAW RAC, 2018)





Articles 10, 11 and 21 of the [SPAW Protocol](#) call for the implementation of programmes in order to protect the species listed under [Annexes I, II and III](#).

- **Article 10** : Parties "carry out recovery, management, planning and other measures to effect the survival of [endangered or threatened] species" and regulate or prohibit activities having "adverse effects on such species or their habitats."
- **Article 11** : Each Party shall ensure total protection and recovery to the species of **fauna listed in Annex II** by prohibiting:
 - i) the taking, possession or killing [...] or commercial trade in such species, their eggs, parts or products;
 - ii) to the extent possible, the disturbance of such species, particularly during periods of breeding, incubation, estivation or migration, as well as other periods of biological stress.
- **Article 21** : identification and selection of protected species to be listed under its Annexes.



➤ Specific recommendation regarding turtles

*Taking note of recent reports on the taking of hundreds of marine mammals per year and reports of harvesting of sea turtles still being allowed by some Contracting Parties, STAC recommends that [...] **Contracting Parties comply with the provisions of the Protocol** and in the event that taking of any species listed under Annex II of the Protocol that **an exemption report be submitted to STAC in order to demonstrate the pertinence of such exemption.***

➤ Continue previous program. Regarding turtles- cooperation with WIDECAST and development of STRAPS (Sea Turtle Recovery Action Plan)

➤ Create/ reinforce ad hoc working groups to address priorities such as:

- ✓ Support of listed protected areas, with particular attention to the ecological connectivity among sites, and strengthening of networking and capacities

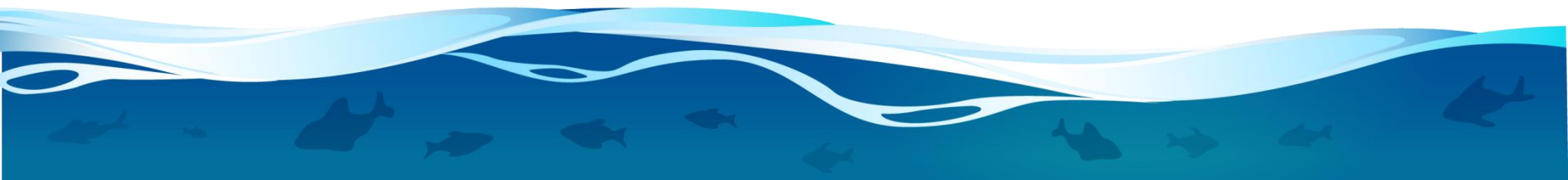




- ✓ Species ad hoc WG :
 - Consider for listing parrotfish and other herbivores associated with coral reefs, sea grass beds and mangroves,
 - Consider for listing additional species of sharks and rays species,
 - Identify how regional collaboration on management strategies would contribute to improved protection of species listed under the Annexes of the Protocol
 - Develop a proposal for a simplified procedure for the listing of critically endangered species?
- ✓ Exemption ad hoc WG
 - encourage the use of the adopted Reporting Format for Exemptions on the Article 11 of the Specially Protected Areas and Wildlife Protocol
 - review provided exemptions
- ✓ Sargassum influx WG : coordination and collaboration with relevant regional and global initiatives in order to promote maximum impact of synergies and solutions to the Sargassum outbreaks.



- From LBS - Land-Based Sources of Marine Pollution Protocol (and SPAW)
 - Development of a Regional Marine Litter Action Plan
 - GCFI and CEP co hosts the Caribbean Node for Marine Litter and developing new projects + GCFI is working to develop a Research Strategy on Pollution and Habitat and an opportunity to look at research in terms of how these interact with turtles
 - Development Regional Nutrients Reduction Strategy + a Regional Habitat Restoration Strategy (supported by UNDP GEF CLME+)
- Next COP for all protocols + Intergouvernemental Meeting will be early June
- SPAW COP is June, 3





*Dankjewel, Thank you,
Gracias, Merci,...*

*UN Environment CAR/CEP
14-20 Port Royal Street
Kingston, JAMAICA*

*SPAW/RAC
DEAL Guadeloupe
Site de Saint-Phy*

sandrine.pivard@developpement-durable.gouv.fr

<http://www.car-spaw-rac.org>

The SPAW-RAC is hosted by DEAL of Guadeloupe contact details have changed. Our new mail (sandrine.pivard@developpement-durable.gouv.fr)

News

SPAW-RAC news

The SPAW-RAC is hosted by DEAL of Guadeloupe contact details have changed. Our new mail (sandrine.pivard@developpement-durable.gouv.fr)

>>> Read more

Meetings and events in 2019

January Dates Topics Place February 0:
25th Session of the International Saebie Information, Kingston, Saint Andrew, Jamaica
>>> Read more

SPAW Newsletter N°22

You can download the SPAW newsletter N°22
>>> Read more

The SPAW-RAC is now hosted by DEAL of Guadeloupe contact details have changed. Our new mail (sandrine.pivard@developpement-durable.gouv.fr)

Commonly used Acronyms

- BEST:** Voluntary scheme for Biodiversity and Ecosystem Services in Territories of European overseas
- CaMPAM:** Caribbean Marine Protected Area Management Network and Forum
- CEP:** Caribbean Environment Programme
- GCFI:** Gulf Caribbean Fisheries

News of the month

Eco-Diving Certification Programme Green Fins comes to the Caribbean...

Projects

- BEST project is over and has achieved great results!.....2
- A BEST 2.0 project in Turks and Caicos Islands (TCI).....2
- A successful CCM/BIOS collaboration.....2
- Training of 13 participants to the third GCRMN.....2
- Caribbean - Capacity Building Workshop.....2

Briefs

- Introducing Ms. Ileana Catalina Lopez.....4
- Sargassum News.....4

SPAW PAs / CaMPAM News

- 13th edition of the Training of trainers (ToT) Programme on Marine Protected Areas (MPAs) Management.....4
- CaMPAM Expert Group.....4
- CaMPAM website migration/database update.....5
- Other happenings.....5

A new Forum exists, dedicated to WIDECAST :



Suscribe : marius.dragin@developpement-durable.gouv.fr



- ✓ Article 21 of the SPAW Protocol: Requires identification and selection of protected species to be listed under its Annexes.
- ✓ → Mandatory information and criteria for inscription of a species:
 - a) scientific and common names of the species;
 - b) estimated populations of species and their geographic ranges;
 - c) status of legal protection, with reference to relevant national legislation / regulation;
 - d) ecological interactions with other species and specific habitat requirements;
 - e) management and recovery plans for endangered and threatened species;
 - f) research programmes and available scientific and technical publications;
 - g) threats to the protected species, their habitats and their associated ecosystems, especially threats which originate outside the jurisdiction of the Party.